



SHA256: 5dd232184a97ba8529bb297e681bbc89814d3772fddb8b226624dd826375e71

SHA1: 6754323bfab97447f7429081c0d432b8ebdc973c

MD5: a9105e2019faa7a6c8a2ed3c7900ce91

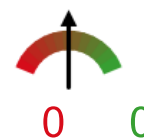
File size: 1.4 KB ( 1409 bytes )

File name: tmpCDC74.FOT

File type: Win16 EXE

Detection ratio: 0 / 43

Analysis date: 2012-02-29 19:09:49 UTC ( 0 minut ago )



Antivirus	Result	Update
AhnLab-V3	-	20120228
AntiVir	-	20120229
Antiy-AVL	-	20120229
Avast	-	20120229
AVG	-	20120229
BitDefender	-	20120229
ByteHero	-	None
CAT-QuickHeal	-	20120229
ClamAV	-	20120229
Commtouch	-	20120229
Comodo	-	20120229
DrWeb	-	20120229
Emsisoft	-	20120229
eSafe	-	20120229
eTrust-Vet	-	20120229
F-Prot	-	20120229
F-Secure	-	20120229
Fortinet	-	20120229
GData	-	20120229
Ikarus	-	20120229
Jiangmin	-	20120229
K7AntiVirus	-	20120229
Kaspersky	-	20120229
McAfee	-	20120229
McAfee-GW-Edition	-	20120229
Microsoft	-	20120229

NOD32	-	20120229
Norman	-	20120229
nProtect	-	20120229
Panda	-	20120229
PCTools	-	20120228
Prevx	-	20120229
Rising	-	20120228
Sophos	-	20120229
SUPERAntiSpyware	-	20120229
Symantec	-	20120229
TheHacker	-	20120228
TrendMicro	-	20120229
TrendMicro-HouseCall	-	20120229
VBA32	-	20120229
VIPRE	-	20120229
ViRobot	-	20120229
VirusBuster	-	20120229

[Comments](#)[Additional information](#)**ssdeep**

6:HRMU/KehWB4tebk1iVisz8cdSwNV23fpm/AQ6aJoKXaBmMdTgcdX:SeZtuk1LA8aIC4P1JBXKTgaX

**TrID**

Win 3.x Installed TrueType Font (34.0%)  
 Generic Win/DOS Executable (32.9%)  
 DOS Executable Generic (32.8%)  
 Autodesk FLIC Image File (extensions: flc, fli, cel) (0.1%)

**ExifTool**

```
MIMEType.....: application/octet-stream
FileType.....: Win16 EXE
```

**First seen by VirusTotal**

2012-02-29 19:09:49 UTC ( 1 minuta ago )

**Last seen by VirusTotal**

2012-02-29 19:09:49 UTC ( 1 minuta ago )

**File names** (max. 25)

1. tmpCDC74.FOT